

Seattle University School of Law

Seattle University School of Law Digital Commons

Law School Viewbooks

Law School Archives

2020

Bulletin 2020-2021

Seattle University School of Law

Follow this and additional works at: <https://digitalcommons.law.seattleu.edu/viewbooks>

Recommended Citation

Seattle University School of Law, "Bulletin 2020-2021" (2020). *Law School Viewbooks*. 54.
<https://digitalcommons.law.seattleu.edu/viewbooks/54>

This Book is brought to you for free and open access by the Law School Archives at Seattle University School of Law Digital Commons. It has been accepted for inclusion in Law School Viewbooks by an authorized administrator of Seattle University School of Law Digital Commons.

AT THE
HEART OF LAW

SEATTLEU
SCHOOL OF LAW

SEATTLEU
SCHOOL OF LAW



“As a proud Seattle U Law alumna, I look forward to welcoming you to this truly outstanding law school community. The world needs powerful advocates for justice, now more than ever, and we are committed to helping you on your unique and individualized journey to becoming a lawyer.”

DEAN ANNETTE E. CLARK '89

“Seattle University is not the kind of law school that asks you to check your deepest commitments at the door. Instead, it challenges you to sharpen your understanding of them and to become an advocate with integrity.”

PRESIDENT EDUARDO PEÑALVER



HERE'S HOW SEATTLE U LAW CAN BENEFIT YOU:



LEGAL WRITING PROGRAM, GIVING YOU THE PROFESSIONAL SKILLS TO ANALYZE, WRITE, AND ADVOCATE FOR YOUR CLIENTS



TOP 25*

CLINICAL TRAINING PROGRAM, WHERE STUDENTS HELP REAL CLIENTS



500+

EXTERNSHIP SITES THROUGHOUT WASHINGTON STATE, THE U.S., AND THE WORLD



THE REGION'S MOST DIVERSE LAW STUDENT BODY AND A COMMITMENT TO ENHANCING DIVERSITY, EQUITY, AND INCLUSION WITHIN THE PROFESSION



TOP 30* PART-TIME FLEX JD PROGRAM, OFFERING A FLEXIBLE HYBRID-ONLINE FORMAT FOR STUDENTS WITH JOBS AND FAMILIES



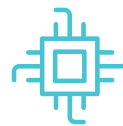
RENOWNED **ACCESS ADMISSION PROGRAM**, DESIGNED FOR STUDENTS FROM UNDERREPRESENTED COMMUNITIES



MOST COMPREHENSIVE **INDIAN LAW PROGRAM** IN THE PACIFIC NORTHWEST



VIBRANT **ACADEMIC RESOURCE CENTER**, PROVIDING SUPPORT SO ALL STUDENTS CAN SUCCEED



ADVANCED COURSES IN **TECHNOLOGY AND INNOVATION LAW**

JOINT DEGREE OPTIONS IN



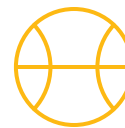
BUSINESS ADMINISTRATION



FINANCE



PUBLIC ADMINISTRATION

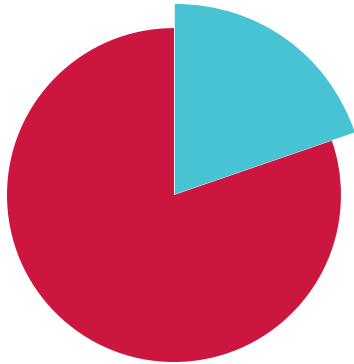


SPORT BUSINESS LEADERSHIP



CRIMINAL JUSTICE

YOU BELONG HERE



830 TOTAL JD STUDENT ENROLLMENT

680 / 82%
FULL-TIME STUDENTS

150 / 18%
PART-TIME STUDENTS
(105 On campus / 45 Flex)



\$51,240

2021-22 TUITION
(\$1,708 per credit)

»»» **2021 FIRST-YEAR ENROLLMENT** «««



27
AVERAGE STUDENT AGE



231
STUDENTS IN FALL 2021 CLASS



124
COLLEGES & UNIVERSITIES REPRESENTED



31
STATES REPRESENTED



BIPOC



FIRST GENERATION COLLEGE STUDENTS



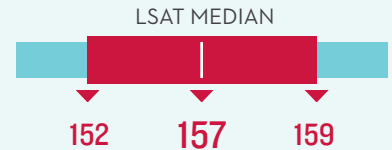
WOMEN



MEN



NON-BINARY



LSAT MEDIAN

152

157

159



GPA MEDIAN

3.09

3.36

3.58

GRE scores accepted in lieu of the LSAT.

21% LGBTQ+



189 / 81%
FULL-TIME

45 / 19%
FLEX JD



229

MEMBERS OF THE JUDICIARY*

*Past and present



170

ATTORNEYS IN ATTORNEY GENERAL'S OFFICE



452

LAW FIRM PARTNERS/ MEMBERS*

*Does not include solo practitioners and managing partners.



281

COUNTY PROSECUTORS



102

COUNTY PUBLIC DEFENDERS

Many of our alumni hold leadership positions at influential companies, including: *Microsoft, The Boeing Company, Amazon, T-Mobile, Starbucks, and Expedia*

“Students at Seattle U are genuinely interested in the success of their peers and future colleagues, and I really value the culture here for that reason.”

ALI HARRIS, CLASS OF 2022



WELCOME TO OUR COMMUNITY!

When we say that we educate “at the heart of law,” here’s what we mean:

Our approach to legal education is centered on our students and driven by our values. We believe lawyers are helpers. We believe law is a tool for social change. We believe one person can make a difference, and we believe that one person is you.

You’ll undertake a rigorous course of academic study, with our accomplished faculty and staff there to support and guide you every step of the way. A sense of purpose, combined with a focus on practical lawyering skills, produces graduates who are both highly capable and compassionate. You’ll gain the essential skills you need to practice law and to advance equity, dignity, and justice at home and around the world.

Camaraderie is a hallmark of our law school. Your classmates will be your biggest champions and your friends for life.

“Seattle U Law educates and empowers law students to not only see the world as *it really is* but to have the courage to challenge our systems and the underlying assumptions so that justice is fully realized in the here and now. Seattle U Law is where I find our greatest advocates for equality and justice.”

JUSTICE MARY I. YU, WASHINGTON SUPREME COURT, AND DISTINGUISHED JURIST IN RESIDENCE AT SEATTLE U LAW





“The legal writing training I received at Seattle University was second to none. It has proven tremendously beneficial in my career.”

HAGEN GANEM '08
ASSISTANT VICE PRESIDENT,
ASSISTANT GENERAL COUNSEL,
CORPORATE & SECURITIES,
AT ROYAL CARIBBEAN GROUP

KNOWLEDGE, SKILLS, VALUES

At Seattle University School of Law, you'll receive a comprehensive legal education from leading scholars and public intellectuals. You'll learn to analyze problems from every angle, as only a lawyer can (and must).

While you build your **critical thinking abilities**, we'll teach you **practical skills**, so you'll be truly ready to practice after graduating.

Our **Legal Writing Program** is nationally renowned. Why?

- › Innovative curriculum, where students work with **actual clients** in their first year
- › **Faculty** who are respected leaders in the field
- › **One-on-one** attention and coaching
- › Integrated skills courses and sequenced assignments build **mastery of skills**

→→ LAW.SEATTLEU.EDU/LEGALWRITING

“We're teaching students to think about what their vision of justice might be and how they might serve that vision as a lawyer when they graduate.”

PROFESSOR DEBORAH AHRENS



TAKE ON REAL CASES

Along with rigorous classroom instruction, you'll have ample hands-on opportunities to strengthen your advocacy abilities.

- › The **Ronald A. Peterson Law Clinic**, one of the country's top 25 clinical programs, is a pro bono law firm within the law school. Students represent clients with real cases under a professor's supervision. Clinics focus on workers' rights, immigration, trademark law, criminal justice, and many other subjects.
- › Our wide-ranging **Externship Program** places you in supervised work settings with advocacy organizations, government offices, and courts, in Seattle and across the world.

→→ LAW.SEATTLEU.EDU/CLINIC

→→ LAW.SEATTLEU.EDU/EXTERNSHIP



“Seattle U encourages its students to explore outside of their comfort zones to find the advocate within.”

MONICA KEO, CLASS OF 2021

FLEX JD FOR PART-TIME STUDENTS

Innovative hybrid format allows you to complete most coursework online, requiring only a few weekend campus visits each year, making a JD accessible for students with jobs and families.

- › Complete this year-round program in just 3-1/2 years.
- › Exceptional faculty teach a balanced curriculum that emphasizes both legal theory and practical skills.
- › Access to clinics, externships, student organizations, and more rounds out your legal education.

→→ LAW.SEATTLEU.EDU/FLEX-JD

FIND YOUR FOCUS

- › Four student-run **law journals** help you improve your writing and research skills while instilling self-discipline and analytical proficiency.
- › Activities such as **moot court, mock trial, alternative dispute resolution, and client counseling competitions** develop critical lawyering skills.
- › Our **Semester in Olympia** program takes you where the action is – you'll learn from legislators and policy makers in the state's capital.
- › Dozens of **student organizations** provide opportunities to explore everything from artificial intelligence to cannabis law.



“Anything that you want to do with your legal education, you can absolutely do coming from this phenomenal school.”

TWYLA CARTER '07, NATIONAL POLICY DIRECTOR, THE BAIL PROJECT
FORMER SENIOR STAFF ATTORNEY, ACLU CRIMINAL LAW REFORM PROJECT



PUT YOUR EDUCATION TO WORK

Seattle U Law has the most extensive alumni network in the Pacific Northwest. Our graduates, 12,000+ strong, are defenders, prosecutors, and judges. They are partners and associates at large and small firms. They fight global disease, serve marginalized communities, and launch innovative tech startups. No matter where you practice after graduation, our alumni will warmly welcome you into this vibrant community of legal professionals.

- › Career counselors in our Center for Professional Development care as much about your legal career as you do and will work with you one-on-one to ensure your success.
- › More than 150 employers visit campus throughout the year to meet and interview our students to fill job and internship openings.
- › We co-host the region’s largest public service career fair.
- › Our popular summer innovation and entrepreneurship program features visits to the region’s leading technology employers.
- › We’ll connect you with one of our supportive alumni mentors in your first year.

→→→ LAW.SEATTLEU.EDU/CAREERS


“Thank you for making me a lawyer. I can’t believe how much I love this work and how privileged I am to be able to do it.”

ERIN LECOCQ '15
ASSISTANT ATTORNEY GENERAL,
NEW MEXICO OFFICE OF THE
ATTORNEY GENERAL



WHERE NEW GRADUATES WORK*

 **55%**
LAW FIRM
(solo to 501+ attorneys)

 **13%**
GOVERNMENT

 **12%**
BUSINESS & INDUSTRY

 **12%**
JUDICIAL CLERKSHIPS

 **7%**
PUBLIC INTEREST



ADVOCATE FOR JUSTICE

Our Jesuit tradition infuses your legal education with a sense of purpose and a call to action. Seattle U Law's core social justice mission is reflected in what and how our faculty teach, and in our clinics, curriculum, student organizations, and centers.

The Fred T. Korematsu Center for Law and Equality combats discrimination and trains the next generation of legal advocates. Students play a key role in the center's significant projects, which have included preventing racial bias within juries, improving the quality of public defense, advocating for the rights of unsheltered people, and protecting immigrants' civil rights.

→→ LAW.SEATTLEU.EDU/KOREMATSU

The **Access to Justice Institute** supports the law school's social justice mission with programs for students and alumni. ATJI coordinates our award-winning Moderate Means Program, spearheads an innovative Incubator Program for new attorneys, and matches students with skill-building volunteer opportunities to help underserved communities.

→→ LAW.SEATTLEU.EDU/ATJI

The **Public Interest Law Foundation** helps students fulfill their passion for helping others by awarding summer grants for unpaid internships at nonprofit organizations and government agencies.

YOUR SUCCESS IS OUR MISSION

Our acclaimed **Access Admission Program** creates a path to rewarding legal careers for students from historically disadvantaged and underrepresented communities. We believe that the potential of these students – 10 percent of each incoming class – is better measured by their persistence, triumph over obstacles, and intellectual curiosity, than by traditional test scores and GPAs.

Our comprehensive **Academic Resource Center (ARC)** offers academic support and the tools – including workshops, study sessions, and individual counseling – to help all students succeed. Despite the rigors of law school, ARC can help build confidence that you belong in the legal profession.

→→ LAW.SEATTLEU.EDU/ARC



When the COVID-19 pandemic caused domestic violence rates to increase, Associate Professor Deirdre Bowen rallied her family law students and alumni volunteers to create a “pop-up clinic” to help survivors seek protection orders. The clinic, a partnership with a local tech company and county prosecutors, had served 400 people by spring 2021.

#1 BEST STATE IN THE COUNTRY
U.S. News & World Report 2021

#1 BEST CITY FOR BUSINESS AND CAREERS
Forbes 2019

#1 BEST CITY FOR JOB OPPORTUNITIES
LinkedIn, 2021

#13 BEST PLACES TO LIVE IN THE U.S.
U.S. News and World Report, 2020-21

 **2,163**
ANNUAL HOURS OF SUNSHINE

 **147**
NUMBER OF RAINY DAYS PER YEAR

 **37.13"**
AVERAGE ANNUAL RAINFALL (less than New York and Boston)

AVERAGE TEMPERATURE HIGHS / LOWS

 **76° / 56°** JULY
47° / 37° JANUARY

COMPANIES THAT CALL THE PUGET SOUND HOME

ALASKA AIRLINES*
AMAZON*
COSTCO*
EDDIE BAUER
EXPEDIA*
EXPEDITORS INTERNATIONAL*
F5 NETWORKS
FILSON

BILL & MELINDA GATES FOUNDATION
GETTY IMAGES
MICROSOFT*
NINTENDO
NORDSTROM*
PACCAR*
REDFIN
REI

STARBUCKS*
SUB POP RECORDS
TABLEAU
VULCAN, INC
WEYERHAEUSER*
ZILLOW

*Fortune 500 company

SEATTLE UNIVERSITY TO DOWNTOWN COMMUTE TIME


20 MIN


13 MIN


10 MIN


5 MIN



Seattle University
School of Law



“I can’t imagine a more exciting place to build a career today than Seattle. All of the alumni, and the positions they hold in this city – they are the key to the city.”

GREG DUFF '94, PRINCIPAL, FOSTER GARVEY PC



Seattle University does not discriminate on the basis of race, color, religion, sex, national origin, age, disability, marital status, sexual orientation, gender identity, political ideology or status as a Vietnam-era or special disabled veteran in the administration of any of its education policies, admission policies, scholarship and loan programs, athletics, and other school-administered policies and programs, or in its employment related policies and practices. In addition, the University does not discriminate on the basis of genetic information or status as a victim of domestic violence, sexual assault, or stalking in its employment related policies and practices, including coverage under its health benefits program. All University policies, practices and procedures are administered in a manner consistent with Seattle University’s Catholic and Jesuit identity and character. Inquiries relating to these policies may be referred to the University’s Interim Assistant Vice President for Institutional Equity/Title IX Coordinator at 206-220-8515 or jmoffitt@seattleu.edu. Consistent with the requirements of Title IX of the Education Amendments of 1972 and its implementing regulations, Seattle University has designated individuals responsible for coordinating the University’s Title IX compliance. Students or employees with concerns or complaints about discrimination on the basis of sex in employment or an education program or activity may contact the following Title IX coordinator or Title IX contact persons: Jill Moffitt, Interim Assistant Vice President for Institutional Equity, Title IX Coordinator | ADA/504 Coordinator, 206-220-8515, jmoffitt@seattleu.edu; Alvin A. Sturdivant, Ed.D., Vice President for Student Development, STCN 140B, 206-296-6066, sturdial@seattleu.edu; Michelle Clements, Vice President for Human Resources, RINA 214, 206-296-5869, clementsm@seattleu.edu. Individuals may also contact the Office for Civil Rights of the U.S. Department of Education. To learn more information about Seattle University’s policies, please visit seattleu.edu/policies.



SEATTLEU

SEATTLE UNIVERSITY
School of Law

901 12th Avenue, Sullivan Hall
P.O. Box 222000
Seattle, WA 98122-1090

law.seattleu.edu

   @seattleulaw



“Standing on that graduation stage, you are breaking down barriers. It is a celebration of those who inspired, supported, and believed in you, and an embodiment of hope for the bright future you are creating for yourself, your community, and those who will come after you.”

ALYSSA GARCIA '19

